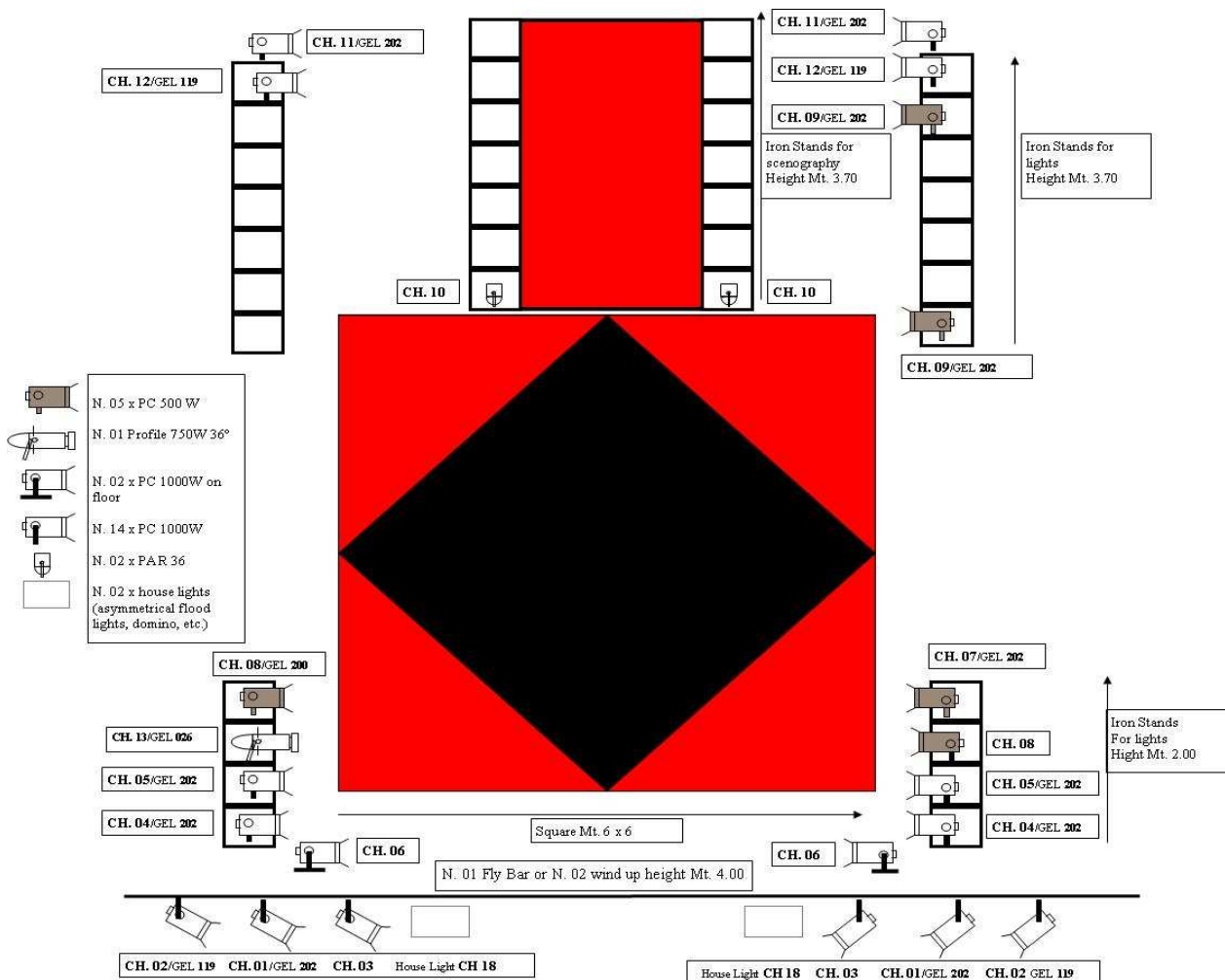
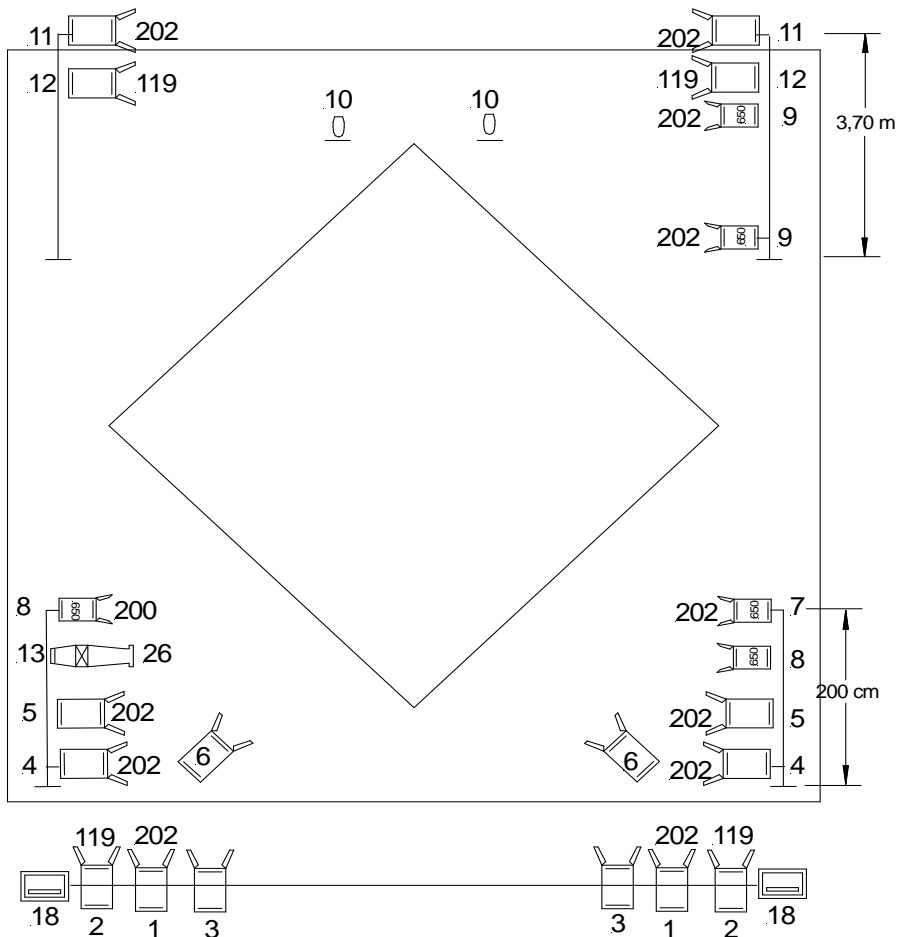


"OperaStracci" Technical Rider - KOREJA

- The present technical rider is an integrant part of the contract - any change must be agreed with the company



Technical requirements

- Stage min 8m x 8m;
- Black dance floor on the stage (**minimum Mt. 6 x Mt. 6**);
- Black box with black backdrop and curtains;
- Min. grid height 4,5m;
- N. 01 fly bar in front of the stage or 2 wind-up min. height 4 Mt. with T Bars for N. 04 lights for each wind up;
- Min. electric load 20 Kw (3 lives + neutral + ground);
- **Ladder for focusing**
- Mixing table must be positioned at the back of the audience in central position;
- Dressing room with shower for 4 actor/actresses;

Lights (see light plan)

N. 01 Light Mixer ADB Tango 48 or similar (**we need to do 35 memories or better a cue list of 35 cues**);

N.18 dimmer channels DMX 2,5 Kw;

N.16 PC 1000w with hooks, barndoors, gel frames (**we need hooks, barndoors and gel frames for all PC**);

N. 05 PC 650w with barndoors, gel frames (**we need barndoors and gel frames for all 650W PC, if you don't have the 650W we can use N. 05 1000W PC too**);

N. 01 profile ETC 750w zoom 25-50 + gel frame (**in case we can use also a fixed 36° optic lens**);

N. 02 PAR 36;

N. 02 asymmetrical floodlight 1000w for house light (**with hooks**);

N. 02 booms height 2mt for 4 spotlights as on the light plan (**Channels 4-5-8-13**), **the lights have to stand in vertical line as cut lights**);

N. 02 floor stands (**for Ch. 06**);

N.16 minimum couplings;

N. 06 minimum multicords of 5 lines;

extensions and adaptators for light and dmx connections;

ladder for focusing

Sound

N. 02 sub + mid/high speakers adequate to the dimension of the audience for F.O.H;

N. 02 little monitor speakers for the stage;

N. 01 audio mixer Yamaha 01(**or similar, we have to connect only a CD Player for music**);

N. 01 CD player with autopause;

stagebox, extensions and adaptators for audio connections;

Scenography (see photos)We need you find / build:

N. 04 iron stands like ladder 3,70mt x 0,46m (**N. 02 for lights Ch. 9 – 11 – 12, and N. 02 for scenography**);

N. 02 black curtains L form, self standing, h.2mt, base 80cm + 50cm;

N. 01 black chair

Technical crew we need:

N. 02 electricians;

N. 01 stagehands;

N. 01 sound engineer;

Set-up time

we need to start setting up the day before the performance.

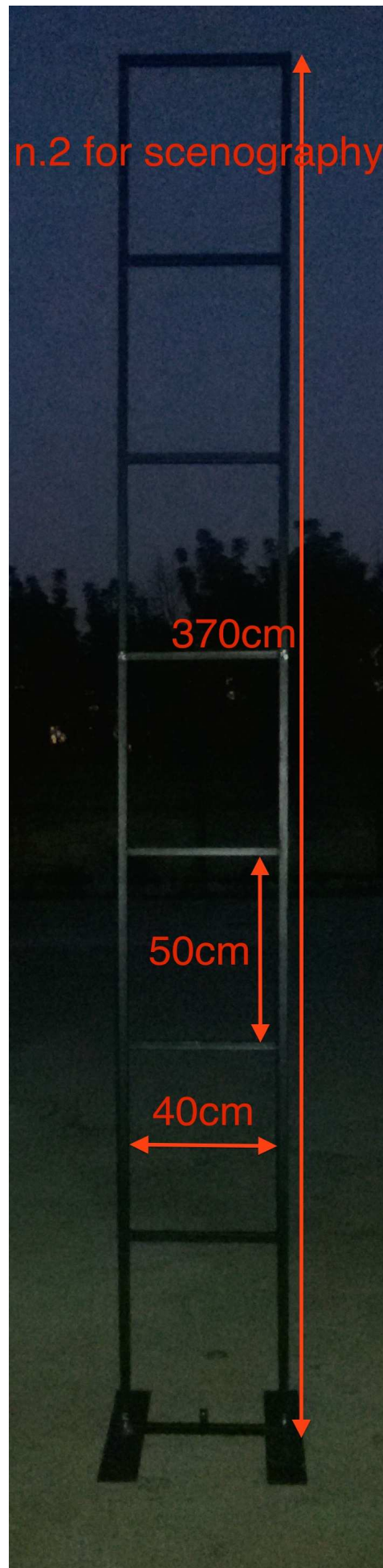
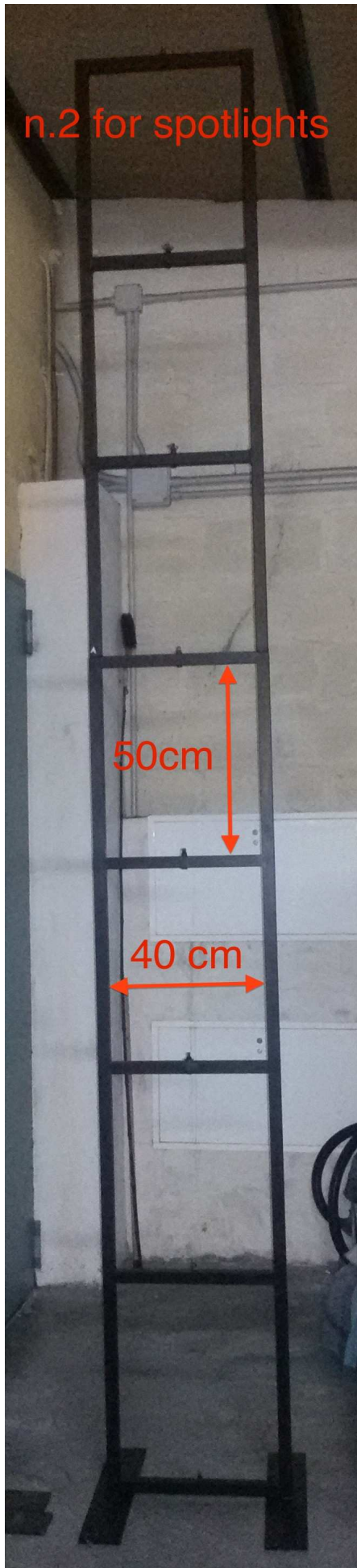
min. 8 hours for set-up

we start working at 9:00 a.m.

Per info Alessandro Cardinale cell. +39 366 5980622 email: <nczkac@gmail.com>

(The organization will provide the permission to pass and park in a guarded park our truck IVECO 29 L 12 numberplated **BZ 889 BN**. Dimensions 6 mt x 2,2 mt x h. 2,4 mt. **(ONLY IF THE STAFF TRAVELS BY CAR)**)

N. 4 iron stands height Mt. 3,70



N. 02 booms for N. 04 lights (Ch. 04 -05 -07 -08 -13) Heigt Mt. 2,00



N. 02 black curtains L form, self standing, h.2mt, base 80cm + 50cm;

